



Autoclave Accessories Catalogue

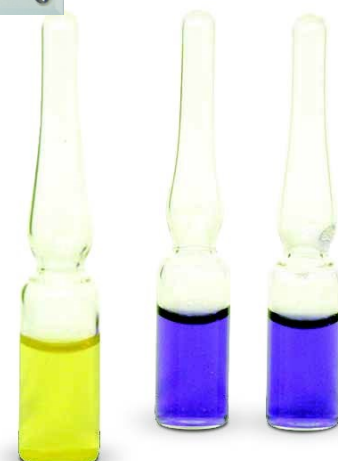


Table Of Contents



Section 1: Autoclave Consumables

Bowie Dick Tests.....	4
Autoclave TST Strips.....	4
Autoclave Tape	4
Chemical process Indicators	4
Spore Ampoules.....	5
SCBIs.....	5
Mini SCBIs.....	5
SCBI Incubators.....	5
Printer Paper Re-fill Rolls.....	6
Printer Ink Ribbon.....	6
3-in-One Cleaning Spray.....	6
Autoclave Bags.....	6

Section 2: PPE (Personal Protection Equipment)

Face Shield.....	8
Heatproof & Waterproof Gloves.....	8
Neoprene Apron.....	8

Section 3: Autoclave Accessories.

Condense Collector.....	10
Siphon Pump.....	10
Autoclave Log Book.....	10
Duran Media Bottles.....	10
SmartLog & SmartLog+.....	11
Independent video graphical data logger.....	11
Thermocouple Entry Adaptor.....	11
Autoclave Replacement Manuals.....	11
Loading Baskets.....	12
Discard Systems / Containers.....	12
Shelves.....	13
Loading Hoists.....	13
Load Simulators.....	13
Scale Prevention System.....	13
Phoenix Mounting Trolley.....	14
Armoured PT100 Load Probe.....	14
Sapphire Door Control Air Compressor.....	14
Air Ballasting Air Compressor.....	14
Abrasive Pads.....	15
Rubber Block.....	15
Autoclave Deodoriser Capsules.....	15

For additional product information:

Call us at +44 (0)1268 286646

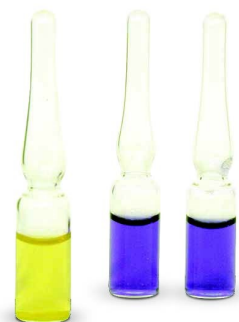
Please visit us at www.rodwell-autoclave.com

E-mail us at :autoclaveservice@rodwellgroup.co.uk



SECTION ONE

Autoclave Consumables.



Bowie Dick Vacuum Penetration Tests

Catalogue No.	Description
885-0301	Bowie Dick Test Pack, Single Use (without heavy metals) Conforms to EN 867-4 For use at Steam 134°C for 3 – 3.5 minutes Or 121°C for 15 minutes 20 Test Packs/Case

885-0301-A	Bowie Dick Test Pack, Single Use (without heavy metals) Conforms to EN 867-4 For use at Steam 134°C for 3 – 3.5 minutes Or 121°C for 15 minutes Individual Test Packs
------------	--



885-0302	Autoclave TST Strips. Shows a pass when exposed to steam for 3.5 minutes at 134°C or 15 minutes at 121°C. Can be placed throughout the load for thorough checking. Box of 100 strips. Type / Class 4
----------	---

Autoclave TST Strips



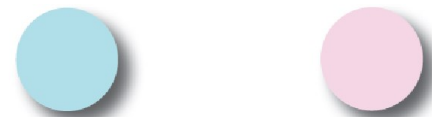
885-0306	White adhesive tape, for use in standard autoclaves. Transitions from green to Orange after 10 mins at 121° C. Provides clean removal from autoclaved object. Can be written on. Tape Size: 18mm x 50m, 12 rolls per box.
----------	--

Autoclave Tape



Autoclave Chemical Process Indicator Dots

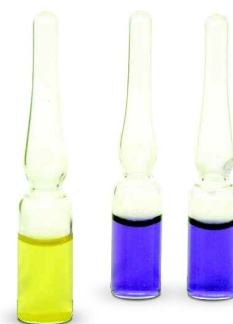
885-0307	Autoclave Chemical Process Indicator self adhesive labels. Indicate at a glance whether the product has gone through the autoclaving process. Labels turn from blue to pink after exposure to 121°C for 3-10 mins, or 134°C for 0.5—2 mins. 5000 dots per roll.
----------	---



Autoclave Spore Ampoule SCBIs

Catalogue No. Description

885-0304 Spore Ampoule Self Contained Biological Indicator (SCBI) for autoclave liquid loads. Contains *Geobacillus Stearothermophilus* with a Log 6 population. Box of 50 with a 24 month shelf life from the date of manufacture. Incubate for 24 hours. keep refrigerated.



Autoclave Self Contained Biological Indicators

885-0303 Autoclave SCBI. Contains *Geobacillus Stearothermophilus* with a Log 6 population. Box of 50 with a 24 month shelf life from the date of manufacture. Crush cap to activate after autoclaving, Incubate for 10 hours.



Mini Autoclave Self Contained Biological Indicators

885-0305 Autoclave SCBI. Contains *Geobacillus Stearothermophilus* with a Log 6 population. Box of 100 with a 24 month shelf life from the date of manufacture. Squeeze side to activate after autoclaving, Incubate for 10 hours.



Self Contained Biological Indicator Incubator

885-0309 10 well aluminium dry block incubator for use in conjunction with SCBIs and Mini SCBIs. Offers a range of ambient to 70°C with a tolerance of $\pm 0.5^\circ\text{C}$.



Rodwell Printer Paper Rolls

Catalogue No.	Description
824-0055-A	Spare paper re-fill for a Rodwell panel mounted integrated autoclave cycle data printer.
824-0055	Spare paper re-fill for a stand alone Rodwell autoclave cycle printer.



Rodwell Printer Ink Ribbon

824-0056	Spare paper Ink Ribbon re-fill for all Rodwell autoclave cycle data printers
----------	--



Rodwell 3-In-One Cleaning Spray

891-0004	Rodwell Autoclave 3-in-one cleaning spray. For use in cleaning and maintaining the autoclave door seal and all stainless parts such as autoclave doors, chambers and head rings.
----------	--

Used & Recommended by
Rodwell Service Engineers!



Rodwell Autoclave Bags

High Temp. up to 145°C

Catalogue No.	L (mm)	W (mm)	Pack Size
885-0310	310	662	200
885-0311	596	413	200
885-0312	816	608	200





SECTION TWO

Autoclave Personal Protection Equipment.

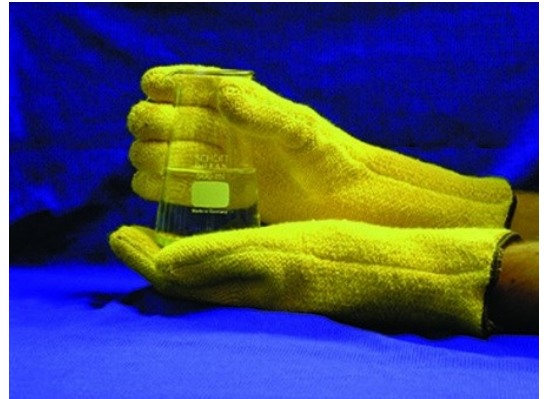
Rodwell Protective Face Shield

Catalogue No.	Description
885-0320	Recommended as part of the autoclave PPE. For use when loading and unloading the machine to protect against hot liquids



Rodwell Heatproof & Waterproof Gloves

885-0321	High Temperature waterproof Gloves. Heat resistant up to 300C for short periods. Recommended as part of the autoclave PPE. For use when loading and unloading the machine to protect against hot liquids
----------	--



Rodwell Neoprene Apron

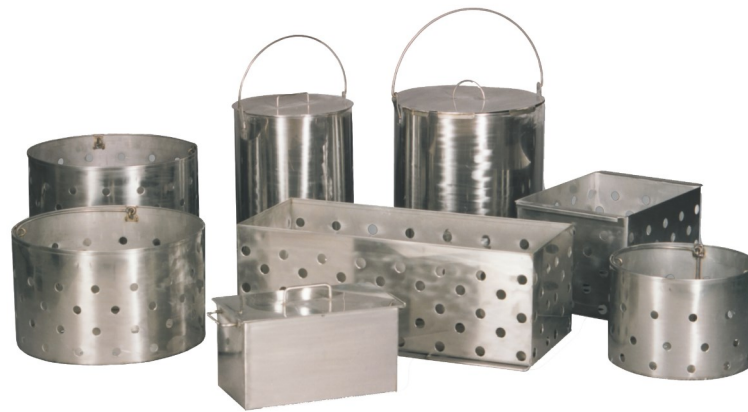
885-0322	Recommended as part of the autoclave PPE. For use when loading and unloading the machine to protect against hot liquids
----------	---





SECTION THREE

Autoclave Accessories.



Catalogue No.	Description
---------------	-------------

317-5041-1	Stainless Steel Autoclave condense collector. Eliminates the need to have the autoclave plumbed into a main drain service. Suitable for all units up to 158 litres. Units of 100L+ would also require the presence of a waterless drain line condenser (AC253). Please contact Rodwell for further information.
------------	---

Condense Collector



885-0323	Rodwell Siphon Pump. Ideal for cleaning out water reservoirs of smaller autoclaves such as the Phoenix, Monarch & Ensign units.
----------	---

Rodwell Siphon Pump



885-0324	Rodwell Autoclave Log Book. For keeping daily records of all autoclave activity, including records of all servicing and maintenance visits for audit purposes.
----------	--

Rodwell Autoclave Log Book



Catalogue No.	H (mm)	Ø (mm)	Size
885-0325	176	86	500ml
885-0326	230	101	1000ml
885-0327	267	136	2000 ml
885-0328	340	186	5000ml

Media Bottles



SmartLog & SmartLog+ Software

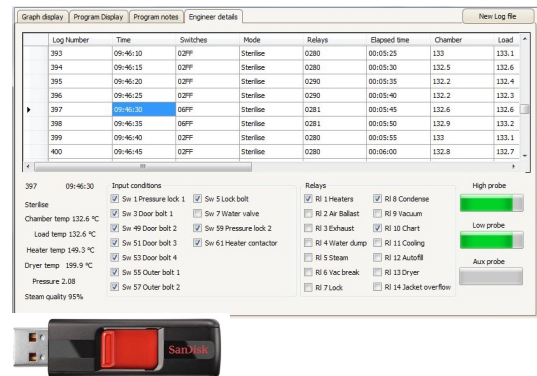
Catalogue No.

Description

309-5206

Rodwell SmartLog software . Enables electronic recording of each and every autoclave cycle to a provided USB stick. Provides full results including full graphical temperature profile, F0 calculations, full time and temperature sample data and full diagnostics which can be sent to Rodwell for remote technical assistance. Contact Rodwell for further information.

SmartLog™



309-5721

In addition to the above, SmartLog + also provides a direct connection to a nearby PC where all data can be stored in duplicate to the PC as well as the attached USB stick. This also provides real-time data for the end user.

Rodwell Video graphical Data Logger

309-5976

Rodwell independent 4 channel video graphical data logger. Record all cycle data electronically and independently of the autoclave's on board controller. All data recorded to SD card. CRF21 Part 11 compliant, offering full F0 calculations. HTM2010 Compliant.



Rodwell Load Validation Port Adaptor

309-5713

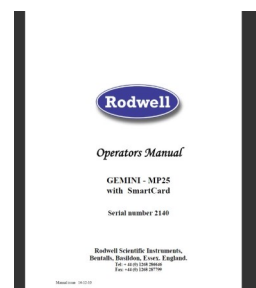
Each and every Rodwell autoclave comes with the provision for load validation via a load validation port within the autoclave's pressure vessel chamber. In order to facilitate the thermocouple entry into these ports, we can provide a specially adapted gland which allows the temporary entry of up to 12 thermocouples.



Rodwell Autoclave Replacement Manuals

894-3033-M (O)
894-3034-M (E)

Each Rodwell autoclave has a specific manual written tailored to describe the options that the machine was originally supplied with. Your machine can be identified with by a four digit serial number on the back of the machine. Please supply us with this number and a new manual can be supplied.



Autoclave Chamber Furniture

Rodwell provides a range of chamber furniture such as shelves, baskets and discard containers for each and every one of its autoclave range. Waste Discard "Systems" do not require the presence of a vacuum system. Discard "Containers" **DO** require vacuum.



Loading Baskets

Catalogue No.	Machine	H (mm)	W (mm)	D (mm)	Ø (mm)
320-0048	Phoenix 40	227	245	430	NA
320-0082	Phoenix 60	227	245	578	NA
317-0096	Monarch	230	NA	NA	320
312-0063A	Ensign 100	280	NA	NA	420
312-0063B	Ensign 125	330	NA	NA	420
315-0177	Ambassador 100	270	360	600	NA
315-0107	Ambassador 100	270	360	300	NA
309-0779	Ambassador 158 Gemini 316	270	370	480	NA
885-0244A	Sovereign Crystal Sapphire Ambassador 158	250	320	320	NA

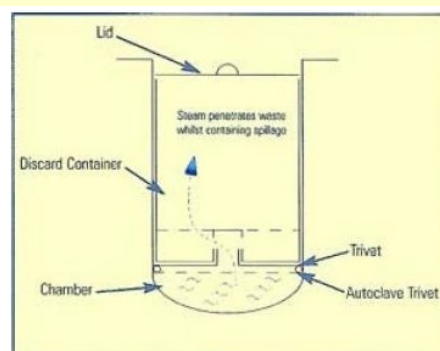
Discard Systems

320-5021-1	Phoenix 40	227	245	430	NA
320-5024	Phoenix 60	227	245	578	NA
317-5014-1	Monarch	486	NA	NA	320
309-5136	Ensign	492	NA	NA	413
315-5045	Ambassador 100	270	360	600	NA
315-5029 (x2)	Ambassador 158 Gemini 316	270	370	480	NA

Discard Containers

885-0244	Sovereign Crystal Sapphire Ambassador 158	250	320	320	NA
----------	--	-----	-----	-----	----

Waste Discard System: A container system can be supplied to contain plastic waste without leakage of effluent in to the chamber and allows effective steam penetration into the waste naturally removing any air pockets without the use of vacuum.

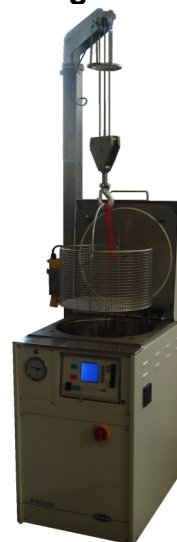


Loading Shelf Cassettes & Shelves

Catalogue No.	Machine	Description
320-5025	Phoenix 40	Shelf Support Cassette plus 3 additional shelves
320-5026	Phoenix 60	Shelf Support Cassette plus 3 additional shelves
315-0043D	Ambassador	Additional S/Steel Perforated Shelf (Max 3)
309-0125R	Crystal 300	Additional S/Steel Perforated Shelf (Max 3)
309-0125J	Sapphire 330	Additional S/Steel Perforated Shelf (Max 3)
309-0125D	Sapphire 440	Additional S/Steel Perforated Shelf (Max 3)
309-0125F	Sapphire 550	Additional S/Steel Perforated Shelf (Max 3)
309-0125L	Sapphire 660	Additional S/Steel Perforated Shelf (Max 3)
309-0125K	Sapphire 770	Additional S/Steel Perforated Shelf (Max 3)

885-0217 The Rodwell Ensign can be supplied with an electrically powered mechanical hoist to assist with loading and unloading heavy loads. Once loaded, the hoist has a pivoting arm for extra convenience. Max. load 60Kg

Ensign Loading Hoist



309-5160 Every autoclave comes with a load probe which is typically positioned into a bottle or other sample. This simulator can be left in permanent situ without the need to actually place a probe within the load itself.

Autoclave Load Simulators



Autoclave Electronic Scale Prevention System

885-0068 Electronic scale prevention system for use on all auto-fill or steam generator units. Simply switch on and allow the system to prevent the formation and build up of scale in your autoclave. Requires no ongoing consumable parts! Please contact Rodwell for further info.



326-5100 (PHX60)
326-5110 (PHX40)

Phoenix Mounting Trolley, for any Phoenix bench top autoclave where there is not sufficient bench top space to sit the unit.

Phoenix Mounting Trolley



836-0203

Armoured PT100 load probe. Strengthened sheath to help extend the life of the autoclave's load probe.

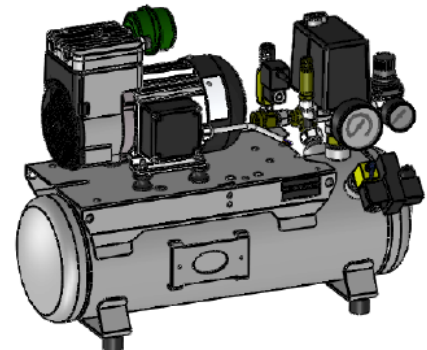
Armoured PT100 Load Probe



840-0252

Air Compressor to power the Sapphire autoclave's door control system,

Sapphire Door Control Air Compressor



840-0215

Silent compressor for air ballasting option on any Rodwell autoclave.

Air Ballasting Air Compressor



891-0043

Book of 6 Abrasive pads designed to help stubborn stains from the autoclave chamber and other stainless steel parts.

Rodwell Abrasive Pads



891-0044

A medium grit rubbing block for removing localised stains from the chamber and other stainless steel parts.

Rodwell Rubber Block



885-0177

Packet of autoclave deodoriser capsules (100) to eliminate unpleasant odours when autoclaving.

Autoclave Deodoriser Capsules



The Rodwell Autoclave Company
Bentalls
Pipps Hill Industrial Estate
Basildon
Essex
SS14 3SD

Tel: +44 (0) 1268 286646
Fax: +44 (0) 1268 287799
Email: autoclaveservice@rodwellgroup.co.uk
Web: www.rodwell-autoclave.com



Every effort has been made to ensure that the information in this catalogue is correct at the time of going to press. The services and products described in the brochure are subject to continuous development & improvement Rodwell Engineering Group Ltd the right to change these at any time. Actual colours & products may vary. All trademarks acknowledged. E. & O.E